



- DNV 2.7-1
- EN12079
- Cargo securing points inside
- Available fully galvanized
- Flemish splice sling option

Our containers are designed and built to DNV 2.7-1 / EN12079 standards capable of handling the dynamic loads inflicted on them by lifting operations between moving vessels in the harshest of environments.

Our Sky Box Mini containers have a mammoth internal height capacity making the absolute best use of the available deck footprint. Provides for weatherproof protection for the transport of tall electrical enclosures and maximizes the available pallet height stacked above and below the removable shelf.

Multiple units can be situated into various areas where project constraints would not normally accommodate for full length containers.

CONTACT INFORMATION

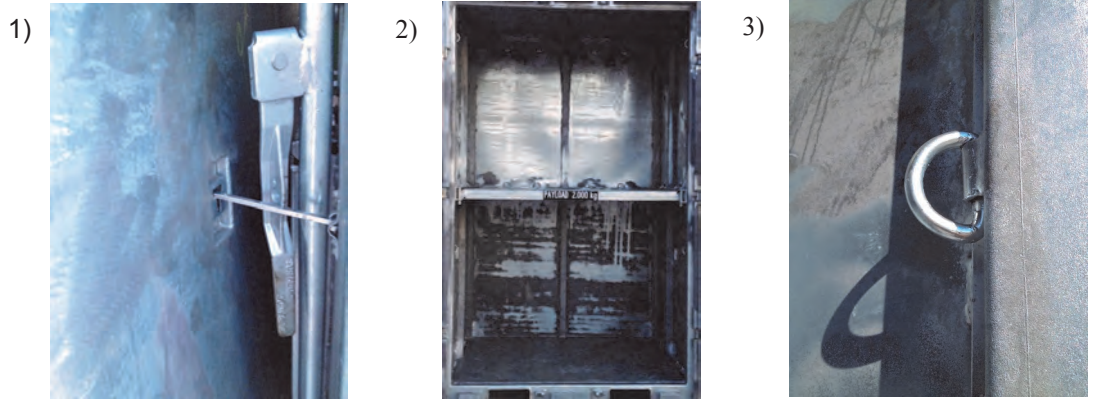
Sales@simmondsequipment.com
TEL- +1 877 271 7466
www.simmondsequipment.com

Sky Box Mini Container

SOCIAL NETWORKING



Additional Benefits



- 1) Recessed door hold back retainers ensure safe access on moving vessels or high winds .
- 2) Removable shelf allows the best use of the available height. Pallets can be placed on top and bottom. Weight capacity of the shelf is 2 Te / 4400 Lbs. This is secured with pins and can be removed and placed on the floor if the full height is required on a returning load.
- 3) Tie down rings inside for securing cargo.

Container Dimensions

Classification		Dimension	
External	Length	1690 mm	5' – 6 17/32"
	Width	1960 mm	6' – 5 5/32"
	Height	3200 mm	10' – 5 31/32"
Internal	Length	1478 mm	4' – 10 3/16"
	Width	1740 mm	5' – 8 1/2"
	Height	2849 mm	9' – 4 5/32"
Door Opening	Width	1740 mm	5' – 8 1/2"
	Height	2793 mm	9' – 1 61/64"
Internal Cubic Capacity		7.44 M ³	262 Cu.ft
Tare Weight (+-2%)		1900 KGS	4190 LBS
Max. Gross Weight		5900 KGS	13010 LBS
Max. Payload for ISO		4000 KGS	8820 LBS

Headquarters

158 N Tunnel Road
Belle Chasse,
Louisiana 70037

+1 (504) 394-7466

Houston Location

12235 FM 529
Houston,
Texas 77041

TEL- +1 877 271 7466