



- DNV 2.7-1
- EN12079
- CSC plated
- Cargo securing points inside
- Available fully galvanized
- Flemish splice sling option

Our Refrigerated Containers (Reefers) are designed and built to DNV 2.7-1 / EN12079 standards capable of handling the dynamic loads inflicted on them by lifting operations between moving vessels in the harshest of environments.

The Reefers can be lifted with slings for an offshore crane lift. They have a Thermoking refrigeration unit that can be maintained and supported by their global network of dealers and service outlets.

These insulated containers will maintain food at the correct temperature (refrigerated or frozen) while powered externally.

It has the advantage of retaining the ISO block configuration along with the pad eyes which allows them to be stacked on location with ISO locks.

Built to CSC standards which allow them to be stacked as regular cargo on a container vessel. This dramatically reduces the trans-ocean transportation cost of oilfield equipment between regions without having to be shipped as out of gauge cargo in flat racks or break bulk. Offshore compliant food transportation that can be shipped globally with minimal logistics costs.

## CONTACT INFORMATION

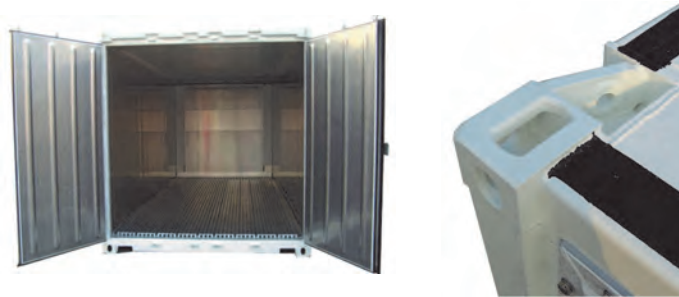
Sales@simmondsequipment.com  
TEL- +1 877 271 7466  
www.simmondsequipment.com

# 20' x 8' Reefer

SOCIAL NETWORKING



## Additional Benefits



Our Reefers are built similar to a marine reefer so you have the maximum available cargo space for palleted food. This is instead of competitors DNV units who use a module inside a container which severely limits the available refrigeration capacity.

### Headquarters

158 N Tunnel Road  
Belle Chasse,  
Louisiana 70037

+1 (504) 394-7466

### Houston Location

12235 FM 529  
Houston,  
Texas 77041

TEL- +1 877 271 7466

## Thermo King MAGNUM PLUS

### Temperature

- Ranges from -35 degrees Celsius to +30 degrees Celsius.
- Any box temperature (-35 degrees Celsius and above)
- In any ambient temperature (even 50 degrees Celsius)

### Other Features and Options

- Unit wired for 380/460V, 3-phase, 50/60 Hz power supply with an 18 meter (60 ft) 11/4 power cable with CEE-17 plug
- Automatic electronic phase correction system
- Rating- 6hp motor

## Container Dimensions

Classification		Dimension	
External	Length	6058 mm	20'
	Width	2438 mm	8'
	Height	2591 mm	8' - 6"
Internal	Length	5490 mm	18' - 9/64"
	Width	2284 mm	7' - 5 59/64"
	Height	2261 mm	7' - 5 1/64"
Door Opening	Width	2280 mm	7' - 5 49/64"
	Height	2244 mm	7' - 4 11/32"
			7' - 1 5/64"
<b>Cargo Loading Height</b>		2161 mm	7' - 1 5/64"
<b>Internal Cubic Capacity</b>		28.1 M <sup>3</sup>	990 Cu.ft
<b>Tare Weight (+-2%)</b>		4280 KGS	9435 LBS
<b>Max. Gross Weight for ISO</b>		24000 KGS	52910 LBS
<b>Max. Payload for ISO</b>		19720 KGS	43475 LBS
<b>MAX Gross Weight for Offshore</b>		14280 KGS	31480 LBS
<b>Max Payload for Offshore</b>		10000 KGS	22045 LBS